



**Hanjeon Metal Co., Ltd.**

(645-480) 25, Namui-ro 43beon-gil, Jinhae-gu, Changwon-si, Gyeongsangnam-do, Korea  
**TEL** +82-055-551-8320~4 **FAX** +82-055-551-8326 **E-mail** hmc@hanjeon.co.kr

[www.hanjeon.co.kr](http://www.hanjeon.co.kr)



The Best Quality Best Service

**HANJEON  
METAL**



**Hanjeon Metal Co., Ltd.**



## GREETINGS

"All the employees of our company are constantly challenging to create an enterprise with dreams and love of customers."

Hanjeon Metal Co., Ltd. has constantly conducted R&D since its foundation on June 1st, 1998, and now produces the hydraulic casting products, which are acknowledged as the best technology in the casting industry, to sell them at home and abroad.

This company will make the best efforts for the increase in exports and development of national industry by producing excellent high-quality products with the pride in producing basic industrial materials.

How are you?

We would like to extend our warm welcome for visiting the Website of Hanjeon Metal Co., Ltd.

This company provides the best products to our customers by developing the core parts of Main Control Valve, which have been considered as the exclusive property of material businesses in advanced nations, and the FCV materials satisfying low noise and high durability for next-generation excavators with our own technology on the basis of our best pride and accumulated technology as a special material business of hydraulic parts of heavy equipments.

We aim to make our society into a more beautiful and blessed base for life leaping forward as the best hydraulic

casting maker through the cutting-edge technical development and nurture of high-class manpower with a new challenge.

We promise that all the employees of our company will make the best efforts to be the trusted partner of our customers with our superb products in order to make the young and lively company that will lead the 21st century which will be dominated by the cutting-edge technology.

Please show us your interest and encouragement also from now on. Thank you.

Hanjeon Metal Co., Ltd.  
**Bum Suck Kim**

## HISTORY

1998  
|  
1999

- 1998. 06. Established as Hanjeon Metal Co., Ltd.
- 1999. 11. Received President's Award of "Million Dollar Export Tower"  
Certification for superior quality by SIGMA (USA)

2002  
|  
2009

- 2002. 07. Certification "ISO-14001" for environment system (SMR, New Zealand)
- 2003. 01. Certified as specialist of hydraulic parts  
(Ministry of Commerce, Industry and Energy)
- 2004. 07. Selected as a prominent SME (Korea Development Bank)
- 2004. 11. "Metal Research Institute" certified by KOITA
- 2005. 05. Selected as a venture company (SMBA)
- 2009. 05. Environmental system obtained "ISO-9001" certification (DAS England)
- 2009. 06~10. Obtained classifications GL (Germany), DNV (Norway), BV (France),  
RINA (Italy), KR (Korea), ABS (USA),  
NK (JAPAN), CCS (CHINA)

2011  
|  
2015

- 2011. 10. Prime Minister's Award in the Root Technology Contest
- 2013. 10. Received Ministry of Trade, Industry, and Energy Award  
in the Root Technology Contest
- 2015. 04. Root Technology Specialist in Gyeongnam region
- 2015. 05. Patent for hydraulic casting technology for FCV materials
- 2015. 06. Selected as a prominent SME (SMBA)



# CERTIFICATION

We are Hanjeon Metal Co., Ltd., a leader in the manufacture of hydraulic casting parts.



# PRODUCTION FACILITIES

"We are continuously challenging for the satisfaction of our customers."

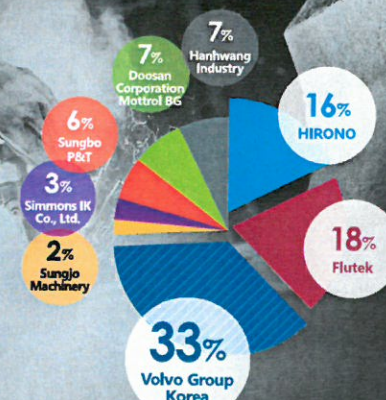
## PRODUCT TYPES

[In 2015]



## CUSTOMER SHARES

[In 2015]



DOMESTIC : 80%  
EXPORT : 20%

## IMPORTANT PRODUCTS

Materia		Ratio	Major Products
FCD	400, 450, 500, 550, 600, 700, 750S	70.0%	MCV BODY, V/V BLOCK, V/V CASING, SPINDLE, ADV, HOUSING SADDLE, GEAR CASE, OIL PAN, D/CASE, CARRIER REAR FLANGE, CYL' BLOCK, S/ PLATE, SHAFT CASING
FC	200, 250, 300	20.0%	SUPPORT, HYDRAULIC HOUSING, MISSION CASE MCV CAP SPOOL, CASING, PISTON BRAKE
FCV	350, 400, 410, 420	10.0%	PUMP CASING(저소음용), MCV Body Holding, MCV RCV Body



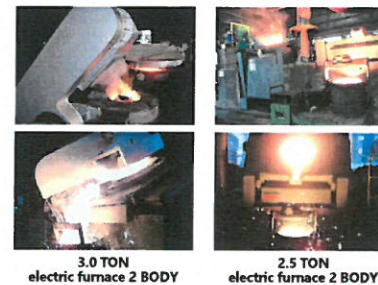
## PRODUCTION EQUIPMENT

FACILITY NAME	SPEC	QTY	PURCHASED YEAR	MAKER
<b>MELTING</b>				
3Ton Hige Frequency Furnace	1,750kw Power Trck	2	1991	Inductotherm/Usa
2.5Ton Hige Frequency Furnace	1,300kw Power Trck	2	2010	Jangin/Korea
MAGNETIC CRANE	φ 1100		2011	Doosan/Korea
CE-METER	C,Si & Nodular ratio	2SET	2009	Nisabu/Japan
<b>MOLDING</b>				
SMS7060R AUTO MOLDING M/C	700X600X250/250	1SET	1994	Koyo/Japan
GREENSAND MIXER	1,000KG	1SET	1994	Koyo/Japan
SYMPSON MIXER(110HP)	1.5TON/Batch	1SET	2010	Shinil/Korea
SPEED MULLER(110HP)	1.5TON/Batch	1SET	1994	Stotz/Germany
FURAN FLOW MIXER	20TON/HR	1SET	1984	Omega/England
FTL(AUTO M/CONTROL)	-	1SET	2005	Kuros/Japan
<b>FETTING</b>				
CONTINUOUS TROLLEY SHOT BLAST	20HP X 6	1SET	1994	Sekwang/Korea
T-TROLLEY SHOT BLAST	20HP X 2	1SET	1993	Youngnam/Korea
APRON SHOT BLAST	15HP X 2	1SET	2008	Catapillar/Korea
BENCH GRINDER etc.	5HP	7SET	1998	Taekyung/Korea
CRANE	1~20TON	12SET	1994~2010	Sungdo/Korea
<b>Shell Core M/C</b>				
SHELL MACHINE TDN-900	AUTOMATIC	1SET	2011	Dukwon/Korea
SHELL MACHINE TDN-500	AUTOMATIC	2SET	2011	Dukwon/Korea
SHELL MACHINE TDN-650	AUTOMATIC	1SET	2011	Dukwon/Korea

## INSPECTION EQUIPMENT

FACILITY NAME	Model (Spec)	QTY	PURCHASED YEAR	MAKER
CE Meter	50TON	1 SET	2016	QURO (Korea)
Spectrometer for Chemical Analysis	ARL MA	1 SET	2012	THERMO(Swiss)
Digital Scope	×20	1 SET	2012	SAMIL(Korea)
Infrared Moisture Determination Balance	0~100%	1 SET	2005	TONGKWANG (Korea)
Rockwell Hardness Tester	3000kg/mm²	1 SET	1997	TONGKWANG (Korea)
Brinell Hardness Tester	3000kg/mm²	1 SET	2012	SAMIL Precision (Korea)
Metallic microscope	×50, ×100, ×200, ×500	1 SET	2012	OLYMPUS (Japan)
2D Measuring Machine	Digital Type 600mm	1 SET	1997	AKASHI (Japan)
Endoscope-360°	Ø5~ Ø8×300mm	1 SET	2011	SCHOLLY (Germany)
Endoscope-180°	Ø5~ Ø8×300mm	1 SET	2009	OLYMPUS (Japan)
Portable Hardness Test M/C	ET 550	1 SET	2016	PROCEQ(Swiss)
Ultrasonic Test Machine	USD 10	1 SET	2004	Krautkraer Branson (Germany)
CE Meter	C, Si, C.E	2 SET	2011	HANTEK (Korea)
Ultrasonic Velocity Gauge	25HPV	1 SET	2014	PANAMETRICS (USA)

## HIGH FREQUENCY ELECTRIC FURNACE



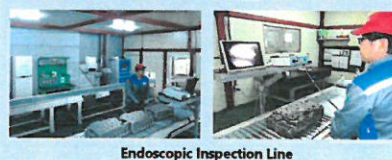
## POURING LINE & CORE DRY FURNACE



## INSPECTION EQUIPMENT



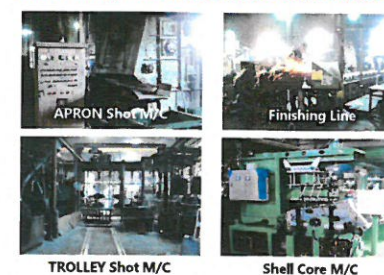
## ENDOSCOPE INSPECTION\_2ND FACTORY



## AUTOMATIC & FURAN MOLDING LINES



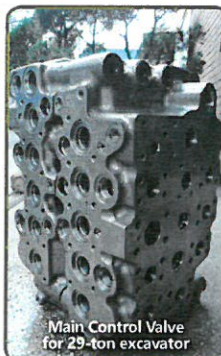
## SHOT M/C, FINISHING LINES & SHELL CORE M/C



Endoscopes \_ (2 set)  
Ø5 & Ø8 × 300mm  
(Scholly \_ Germany)



# HEAVY EQUIPMENTS



Main Control Valve for 29-ton excavator



Main Control Valve for 22-ton excavator



Main Control Valve for 32-ton excavator



Excavator select body



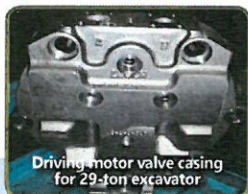
Excavator piston brake



Excavator (Doosan) driving motor valve casing



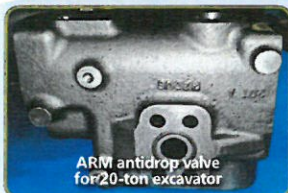
Excavator (Doosan) driving shaft casing



Driving motor valve casing for 29-ton excavator



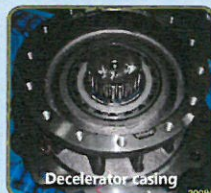
Boom antidrop valve for 35-ton excavator



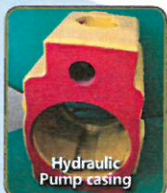
ARM antidrop valve for 20-ton excavator



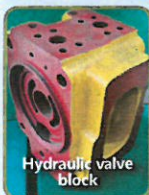
Boom antidrop valve for 20-ton excavator



Decelerator casing



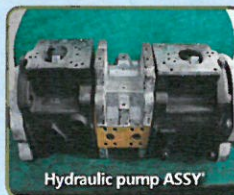
Hydraulic Pump casing



Hydraulic valve block



Hydraulic cylinder block



Hydraulic pump ASSY



Excavator turning joint hub

# AGRICULTURAL MACHINES



Tractor axle housing



Tractor fly wheel housing



ARM for tractor



Support 2 for tractor



Support for tractor

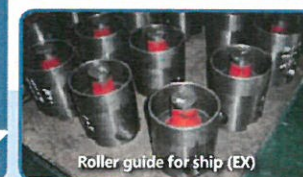


Tractor engine manifold

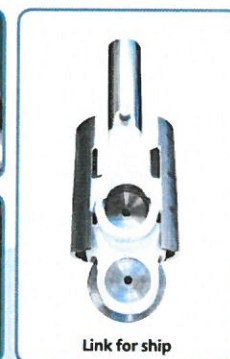
# SHIP ENGINE



Roller guide for ship



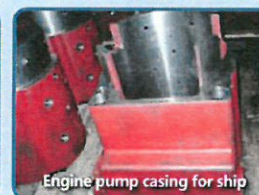
Roller guide for ship (EX)



Link for ship



Oil cylinder for ship

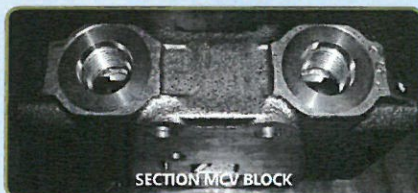
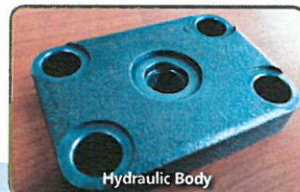
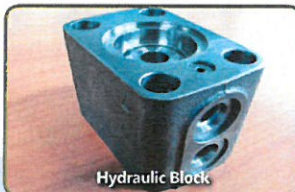
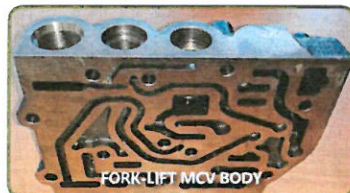
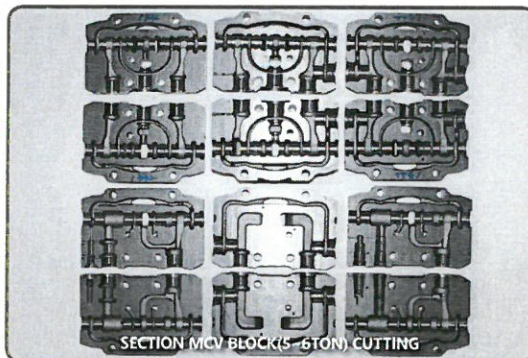


Engine pump casing for ship



Winch assembly for ship



SHELL  
MOLD

## SHELL MOLD - GIMHAE FACTORY



"We are Hanjeon Metal Co., Ltd. a leader  
in the manufacture of hydraulic casting parts."

