

SPECO

www.speco.co.kr

Asphalt Mixing Plant

SPECO



Headquarters : 313 Soi-ro, Soi-myeon, Eumseong-gun, Chungbuk, Korea
Seoul Office : Samick Musical Instruments Building, 171 Hakdong-ro, Gangnam-gu, Seoul, Korea
Phone Inquiry : +82 43 871 4711
www.speco.co.kr

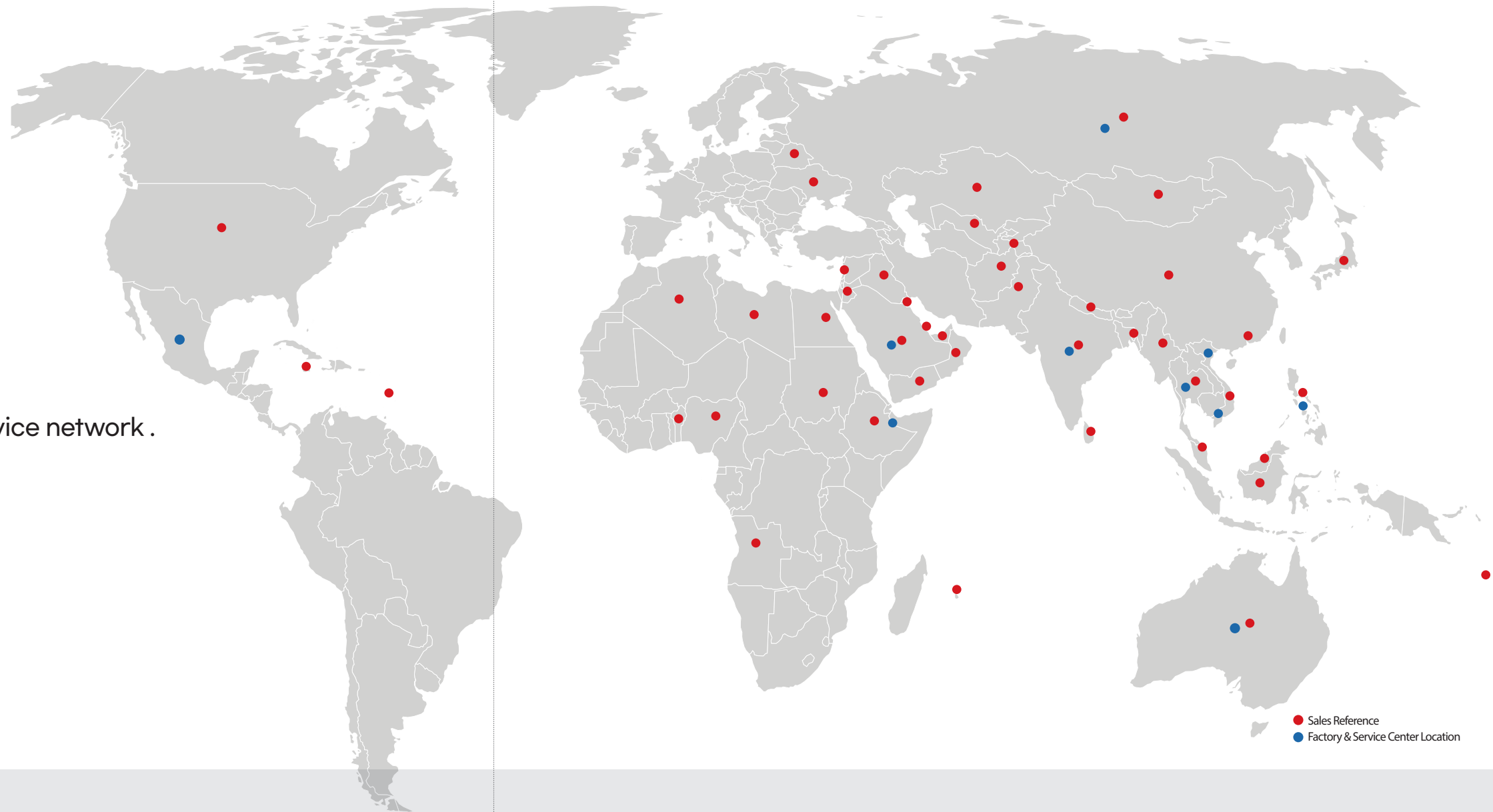
A GLOBAL COMPANY



SPECO's widespread and effective service network .

Mexico, Vietnam (Hanoi, Ho Chi Minh), Thailand, Philippines,
Russia, Australia, Saudi Arabia, India, Ethiopia.

ABOUT US



A global company with the best technology to lead the future

Founded on February 7, 1979, SPECO was listed on KOSDAQ market on November 3, 1997. Since its foundation, SPECO has been manufacturing, producing, and exporting various products, including asphalt plants, which are key equipment in the road construction field. Based on constant research and development, we are exporting products to major overseas construction companies as well as domestic road construction sites in order to participate in infrastructure projects around the world and to contribute to the development of global road construction.

In addition to our asphalt plant business, we operate a construction equipment business, including concrete plants and crushers, and a wind power and defense industry equipment businesses. We are leading change and innovation by implementing a smart factory to respond to industrial

changes brought about by the 4th Industrial Revolution. Supplying excellent-quality plants, we have been recognized as a world-class company by more than 2,500 customers around the world.

We have state-of-the-art manufacturing production lines and experts to enable professional production of various types of equipment, and we are exporting not only from our domestic production bases (Eumseong, Chungbuk) but also wind power plants all over the world from our plant in Monclova, Mexico.

We will continue to strive to be reborn as the world's No. 1 plant company that rewards customers with the best-quality products through generous investments in continuous R&D.

+60 Countries Partners

More than **2,500** units are installed worldwide.



Quality

3D simulation solutions are used in the era of Industry 4.0 to proactively anticipate problems and provide solutions to ensure the best quality.



Smart Care

The state-of-the-art control systems allow for preventive maintenance before the occurrence of any problem to maximize efficiency all the time through the stable operation of the plant.



Modern Technology

In order to respond to, and lead, industrial changes arising from the 4th Industrial Revolution, we are continuing to change and innovate, such as by implementing a smart factory.

A GLOBAL COMPANY SPECO

HISTORY

These are the footsteps that SPECO has followed to become the world's No. 1 plant manufacturer.

- 1979 ● Established Shinsaeng Plant (in Seoul)
- 1982 ● Entered into a technical alliance with Germany-based ALCON
Received commendation from the Minister of Commerce, Industry and Energy on Trade Day
- 1996 ● Acquired ISO 9001 certification
- 1997 ● Listed on KOSDAQ
Changed the name of the company to SPECO Co., Ltd.
- 1998 ● Entered a technical alliance with France-based LAB
- 1999 ● Acquired plant business of Halla Heavy Industries
- 2000 ● Plant relocated (to Eumseong, Chungbuk)
- 2001 ● Received the Prime Minister's Award
- 2002 ● Samick Musical Instruments Co., Ltd., made an investment (of KRW 12 billion)
- 2007 ● Received Prime Minister Award (by achieving 20 million dollar export)
- 2008 ● Invested in a local corporation in Mexico (A total of USD 30 million in installments)
- 2010 ● Received the Prime Minister's Award on Trade Day (for achieving USD 30 million in exports)
- 2018 ● Designated as a global hidden champion
- 2020 ● Certified as a company with excellent technical capability
- 2021 ● Promotion of an enterprise-level digital transformation
- 2030 ● Goal of becoming the world's largest plant manufacturer



Stationary Asphalt Mixing Plant

Korea's No. 1 asphalt plant manufacturer, SPECO, manufactures the best asphalt plants with technology secured through the supply of fixed asphalt plants for the construction of large and small roads in Korea in the past and based on continuous research and development. These make it possible to stably operate highly efficient plants at road construction sites, and provide high productivity and efficiency with long durability and error-free accuracy.



◀ BM-800, BM-1000



◀ BM-1300, BM-1500



BM-2000



BM-2500



BM-3000

DESCRIPTION		BATCH MASTER SERIES (STATIONARY TYPE)						
		BM-800	BM-1000	BM-1300	BM-1500	BM-2000	BM-2500	BM-3000
MAX. CATACTY	AT 4% MOISTURE : T/H	64	80	104	120	160	200	240
COLD BIN	CAPACITY : M(3)	5	7	8	8	12	12	18
	LOADING SIZE (mm)	2200 X 2900	2250 X 3300	2280 X 3300	2280 X 3300	2280 X 4150	2280 X 4150	3200 X 3810
	NUMBER OF COLD BIN	4~5 / up to 6						
BURNER	CAPACITY	4,900,000 Kcal/hr (LB-80)	7,500,000 Kcal/hr (LB-100)	7,500,000 Kcal/hr (LB-100)	9,000,000 Kcal/hr (LB-120)	12,000,000 Kcal/hr (LB-160)	15,000,000 Kcal/hr (LB-200)	18,000,000 Kcal/hr (LB-240)
	FUEL	Diesel oil or heavy oil (Optional : LNG)						
VIBRATING SCREEN	SCREENING	4-fraction	4~5-fraction		4~6-fraction			
WEIGHING	AGGREGATE (kg)	90%	90%	90%	90%	90%	90%	90%
	FILLER (kg)	5~8%	5~8%	5~8%	5~8%	5~8%	5~8%	5~8%
	ASPHALT (kg)	5~8%	5~8%	5~8%	5~8%	5~8%	5~8%	5~8%
MIXER	CAPACITY	800KG / BATCH	1000KG / BATCH	1300KG / BATCH	1500KG / BATCH	2000KG / BATCH	2500KG / BATCH	3000KG / BATCH
BAG FILTER	AREA(M(2))	240	323	323	378	498	610	738

* This specification is subject to change without prior notice due to improvements and/or modifications

Mobile Asphalt Mixing Plant

Each compact component we researched and developed was designed not only to optimize “mobility” but also to allow a series of processes such as drying, weighing, mixing and discharging aggregates, to be fully operated automatically. In particular, cold bins, dryers, weighing and mixing bodies and bag filters are allowed for rapid movement, shortening the installation time and minimizing the installation area at road construction sites.



MBM-800



MBM-1300



MBM-1500



MBM-2000

DESCRIPTION		MOBILE BATCH MASTER SERIES (MOBILE TYPE)			
		MBM-800	MBM-1300	MBM-1500	MBM-2000
MAX. CATACTY	AT 4% MOISTURE : T/H	40~60	104	120	160
COLD BIN	CAPACITY : M(3)	8	8	8	8
	LOADING SIZE (mm)	2280 X 3000	2280 X 3000	2280 X 3000	2280 X 3000
	NUMBER OF COLD BIN	4~5 / up to 6			
BURNER	CAPACITY	4,900,000 Kcal/hr (LB-80)	7,500,000 Kcal/hr (LB-100)	9,000,000 Kcal/hr (LB-120)	12,000,000 Kcal/hr (LB-160)
	FUEL	Diesel oil or heavy oil (Optional : LNG)			
VIBRATING SCREEN	SCREENING	4-fraction	4~5-fraction	4~6-fraction	
WEIGHING	AGGREGATE (kg)	90%	90%	90%	90%
	FILLER (kg)	5~8%	5~8%	5~8%	5~8%
	ASPHALT (kg)	5~8%	5~8%	5~8%	5~8%
MIXER	CAPACITY	800KG / BATCH	1300KG / BATCH	1500KG / BATCH	2000KG / BATCH
BAG FILTER	AREA(M(2))	240	323	378	498

* This specification is subject to change without prior notice due to improvements and/or modifications

Recycling Asphalt Mixing Plant

As global interest in environmental pollution has increased, the problem of the disposal of waste asphalt concrete, which occurs frequently during road maintenance, has emerged. SPECO's Recycled Asphalt Plant, a facility that produces asphalt concrete by reheating waste asphalt concrete and mixing it with raw materials such as new aggregates, uses eco-friendly, advanced equipment that helps reduce production costs.



SR-60



SR-90



SR-120



DESCRIPTION	Recycling asphalt plant		
	SR-60	SR-90	SR-120
MAX. CATACTY	60 T/hr.	90 T/hr.	120 T/hr.

* This specification is subject to change without prior notice due to improvements and/or modifications

Main Component

01. Mixer

- Direct drive twin shafts are driven by two individual motors with eight V-belts that transfer sufficient power to smoothly drive shafts.
- Optimized design offers 20% more productivity.
 - Arm protector, and coated tip enable five times longer life.
 - Dust, and bitumen contamination to the mixer cylinder is avoided by a side cylinder design.
 - 100% High Density Tungsten Tip Protector guarantee long life & durability
 - Low noise creation by V-belt driving



02. Dryer

By the innovative flight design, the aggregates curtain is formed immediately after the feeding section, and keeps smoothly moving forward up to the burner chamber, then, flows toward the discharge chute no longer forming aggregates curtain. Dryer support rollers are fixed on the frame with a center pin, so, the dryer position shall not be changed, and factory pre-alignment is widely applied for easy adjustment. Unlike any other conventional dryers with irregular inner flight design, SPECO dryer materializes complete aggregate curtain to maximize the heating efficiency.



Main Component

03. Low Noise Burner

SPECO low noise burner is originally invented by SPECO, and patented. Unlike any other conventional fuel atomizing burners, SPECO burner utilizes air atomizing system which gives low fuel consumption, and 100% combustion. For safety feature, a turbo fan damper is automatically adjusted by the supplied air, and fuel ratio.

SPECO low noise burner utilizes a trochoid pump using low pressure of 10Kg / Cm(2) to reduce the noise, and with compressed air supply, the complete combustion can be materialized as always.



04. Dust collecting system (Primary de-duster & bag filter house)

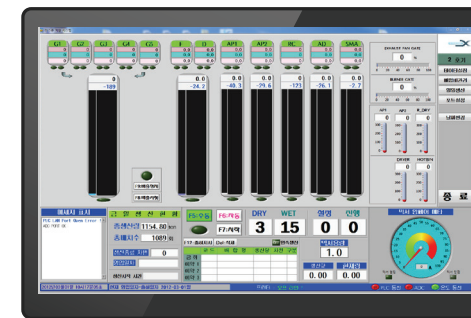
SPECO bag filter house is designed to provide the largest volume for give airflow with filter bag cleaning system by the pulse jet air. Coupled with a bag filter house, a primary de-duster is also provided above the dryer. The air header is mounted on the top of bag filter house for easy access, and maintenance work.

- Maximized airflow, and filtration
- Temperature detector for bag protection.
- Efficient bag cleaning by air pulse jet.
- Easy access, and maintenance by top mounted air headers.

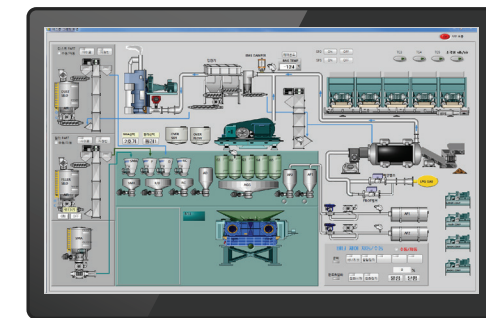


SPECO Plant Control System

- Management of equipment history
- Providing alarms according to replacement cycles of parts
- Checking the operational status of equipment remotely and alarms for the replacement of parts by using the smartphone app
- Remote A/S service
- Monitoring temperature management
- Automatic feeding of aggregates
- Monitoring fuel usage
- Controlling motor and load by using a mouse



Weighing Screen



AP Production Screen



Pop-Up Message

SPECO Customer Service

- 24/7/365 responses to requests for service
- Through the use of SPECO maintenance, repair, and overhaul (MRO) services,
 - Increase operation and efficiency of plant equipment management
 - Maintain the excellent performance of plant equipment and increase equipment life cycles
 - Minimize maintenance costs and scheduling through pre-inspection
 - Improve the operational and management ability of the managers in charge

