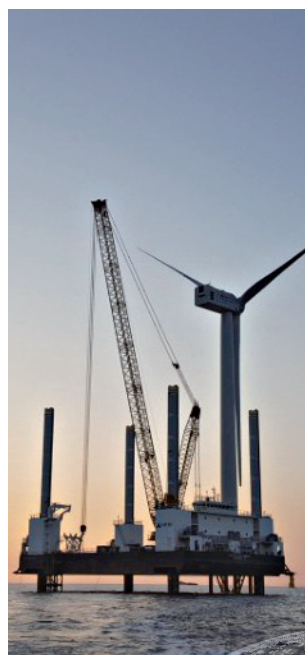


C O N S T R U C T I O N M A C H I N E C O . , L T D



SAMBOCMC

Special features

SAMBO CMC's RCD machines (SPD150~750) are large bored pile equipment of soil foundation job sites as bridges, buildings and subways and used for the vertical excavation work by means of the installed power swivel with rotary bits based on hydraulic system. It brings the rapid enhancement of work efficiency according to speedy excavating capacity without noise and vibration, and is not influenced by a variety of soil.

삼보씨엠씨의 RCD 장비는 유압시스템을 이용한 파워 스윙벨, 암굴착용 드릴 비트를 장착하여 수직, 굴착하는 대구경 암굴착 장비로써 해상교량 및 고층 빌딩, 지하철 시공 기초공사 현장에 사용된다.



SPD750

- Job site : Sin Uljin in Rep of KOREA
- Supply year : 2011.11
- Drilling diameter : 7.5M
- Drilling depth : 50M
- Max.Power Swivel Torque : 1,200
- Max.Drilling Speed(rpm) : 3.2
- Engine output : 760hp
- Max.pressure : 320bar



SPD200

- Job site : Vanino in RUSSIA
- Supply year : 2017.09
- Drilling diameter : 2M
- Drilling depth : 47M
- Max.Power Swivel Torque : 200
- Max.Drilling Speed(rpm) : 0~9
- Engine output : 360hp
- Max.pressure : 320bar



SPD150

- Job site : Jurong island in SINGAPORE
- Supply year : 2013.11
- Drilling diameter : 1.5M
- Drilling depth : 45M
- Max.Power Swivel Torque : 160
- Max.Drilling Speed(rpm) : 0~11
- Engine output : 260hp
- Max.pressure : 300bar



SPD150

- Job site : Sin Uljin in Rep of KOREA
- Supply year : 2013.03
- Drilling diameter : 1.5M
- Drilling depth : 50M
- Max.Power Swivel Torque : 160
- Max.Drilling Speed(rpm) : 0~11
- Engine output : 260hp
- Max.pressure : 300bar



SPD300

- Job site : Tsim Sha Tsui in HONGKONG
- Supply year : 2013.05
- Drilling diameter : 3M
- Drilling depth : 60-100M
- Max.Power Swivel Torque : 360
- Max.Drilling Speed(rpm) : 0~8
- Engine output : 360hp
- Max.pressure : 320bar



SPD300

- Job site : Tsim Sha Tsui in HONGKONG
- Supply year : 2012.12
- Drilling diameter : 3M
- Drilling depth : 80-100M
- Max.Power Swivel Torque : 360
- Max.Drilling Speed(rpm) : 0~8
- Engine output : 360hp
- Max.pressure : 320bar

Reference List

1	SPD300	Rep of KOREA	2004.12.10	61	SPD300&SPP600/800	CHINA	2020.04.02
2	SPD300	Rep of KOREA	2005.02.02	62	SPD300&SPP600	CHINA	2020.04.29
3	SPD200	Rep of KOREA	2005.04.06	63	SPD300&SPP600	SINGAPORE	2020.05.13
4	SPD200 & SPP260	Rep of KOREA	2008.03.25	64	SPD250&SPP360	HONGKONG	2021.01.05
5	SPD300	RUSSIA	2009.06.17	65	SPD200&SPP260	HONGKONG	2021.02.17
6	SPD300	HONGKONG	2009.06.23	66	SPD200 & SPP260	SINGAPORE	2021.05.13
7	SPD200	MACAU	2011.08.11	67	SPD200 & SPP360	SINGAPORE	2021.05.27
8	?	?	?	Total Amount (From 2004 to 2021) : 67sets			

Special features

SAMBO CMC's Casing Oscillator for large bored Pile equipment is used for transferring the load of upper structure to the ground layer by mechanical excavation.

- Max drilling Dia : 3.3M
- Max extracting depth : 100M

삼보씨엠씨의 케이싱 오실레이터는 기계 굴착에 의한 대구경 현장 타설 말뚝을 심는 장비로써, 상부구조물의 하중을 지지층에 전달시키기 위하여 사용된다.



SCO300

- Job site : Mid-levels east in HONGKONG
- Supply year : 2011.02
- Drilling diameter : 3.0M
- Drilling depth : 100M
- Engine output : 360hp
- Max.pressure : 320bar
- Weight : 57ton



SCO200

- Job site : Jurong island in SINGAPORE
- Supply year : 2014.06
- Drilling diameter : 2.0M
- Drilling depth : 60M
- Engine output : 260hp
- Max.pressure : 300bar
- Weight : 28ton



SCO300

- Job site : Mid-levels east in HONGKONG
- Supply year : 2011.02
- Drilling diameter : 3.0M
- Drilling depth : 100M
- Engine output : 360hp
- Max.pressure : 320bar
- Weight : 57ton



SCO150

- Job site : Jurong island in SINGAPORE
- Supply year : 2014.06
- Drilling diameter : 1.5M
- Drilling depth : 60M
- Engine output : 260hp
- Max.pressure : 300bar
- Weight : 20ton



SCO300

- Job site : Cheung Sha Wan in HONGKONG
- Supply year : 2011.09
- Drilling diameter : 3.0M
- Drilling depth : 80M
- Engine output : 360hp
- Max.pressure : 320bar
- Weight : 57ton

Reference List

1	SCO300	HONGKONG	2010.10.05	24	SCO300	HONGKONG	2019.01.11
2	SCO300	HONGKONG	2011.02.12	25	SCO300&SPP360	HONGKONG	2020.05.13
3	SCO300 & SPP360/600	MACAU	2011.09.15	26	SCO300	HONGKONG	2020.11.15
4	SCO200	HONGKONG	2011.12.25	27	SCO330H+SPP600/900	HONGKONG	2021.03.25
5	SCO250 & SPP360/600	HONGKONG	2012.04.20	28	SCO200&SPP260	SINGAPORE	2021.05.13
6	SCO300	HONGKONG	2012.05.10	29	SCO200&SPP360	SINGAPORE	2021.05.27
7	SCO300	MACAU	2012.05.25	30	SCO300	HONGKONG	2021.06.05
8	?	?	?	Total Amount (From 2010 to 2021) : 30sets			

Special features

SAMBO CMC's Hammer Grab is a large bored pile equipment for the foundation and excavating round section shape. Hammer grab is used for the foundation works which occur large load and moment.

지하 대구경 장비로서 단면형상이 원형으로 시공가능하다. 깊은 심도까지 시공이 가능하고 자갈층 및 암반층의 굴착도 가능하다. 특히, 도로교량, 철도교량, 건물기초, 항만시설 등 큰 하중이나 Moment가 발생하는 기초에 널리 사용된다.



SMG15ST

- Job site : HONGKONG
- year : 2015.12
- Casing diameter : 1,500mm / 1,400mm
- Excavation diameter : D1,360mm
- Jaw capacity : 850Liter
- Weight : 4.5ton



SLKG300

- Job site : HONGKONG
- Supply year : 2014.03
- Casing diameter : 3,000mm / 2,840mm
- Jaw capacity : 3,900Liter
- Weight : 22ton



SMG30HGHD

- Job site : HONGKONG
- Supply year : 2013.09
- Casing diameter : 3,000mm / 2,840mm
- Excavation diameter : D2,570mm
- Jaw capacity : 4,500Liter
- Weight : 19ton



SLKG300

- Job site : HONGKONG
- Supply year : 2014.03
- Casing diameter : 3,000mm / 2,840mm
- Jaw capacity : 3,900Liter
- Weight : 22ton



SMG12XLT

- Job site : Rep of KOREA
- Supply year : 2007.12
- Casing diameter : 1,200mm / 1,120mm
- Excavation diameter : D1,050mm
- Jaw capacity : 520Liter
- Weight : 4.5ton

Reference List

1	SMG15ST	GERMANY	2006.12.03	39	SLKG300	HONGKONG	2020.10.07
2	SMG15 & 20ST	Rep of KOREA	2007.10.20	40	SMG15XLT	SINGAPORE	2020.12.15
3	SMG15 & 20ST	Rep of KOREA	2007.11.05	41	SLKG200	HONGKONG	2021.01.05
4	SMG12ST	Rep of KOREA	2007.12.14	42	SLKG250	HONGKONG1	2021.01.21
5	SMG15 & 20ST	Rep of KOREA	2008.03.07	43	SMG25HGHD	HONGKONG	2021.03.18
6	SMG10ST	Rep of KOREA	2008.05.12	44	SMG20HD	HONGKONG	2021.04.05
7	SMG15ST	MACAU	2008.06.23	45	SMG25HGHD	HONGKONG	2021.04.05
8	?	?	?	Total Amount (From 2006 to 2021) : 45sets			

Special features

Diaphragm walls are common practice in civil engineering, it allows permanent constructing walls under the ground. SAMBO CMC's CSC, SC series D/W cutter technologies has been extensively applied to the foundation of Diaphragm Wall, [e.g. Road Bridges, Dam, Metro, Building Foundation, Basement for storage, Harbor facilities]

삼보씨엠씨의 연속벽 커터 기술은 지하 연속벽 공사(교량, 댐, 지하철, 고층 빌딩 기초 공사, 지하 저장, 항만 시설 기초 공사)에 광범위하게 적용, 사용 되어 왔음.

- 유압, 머드호스의 상-하강은 커터의 굴착속도에 따라 자동으로 HTS(Hose Tensioning System) 또는 HDS(Hose Drum System) 기술을 채택 사용함. 굴착시 편차를 보정하기 위해 플랩을 별도 장착하였으며, X-Y 굴착 수직도의 기록 및 데이터 출력이 가능함.



CSC40 HDS60

- Job site : Rep of KOREA
- Supply year : 2015.11
- Cutting depth : 60M
- Trench width : 1200mm
- Max.torque : 100kNm
- Rotation speed : 0~25rpm
- Weight : 35ton



CSC40 HDS80

- Job site : HONGKONG
- Supply year : 2017.12
- Cutting depth : 80M
- Trench width : 1200mm
- Max.torque : 100kNm
- Rotation speed : 0~25rpm
- Weight : 35ton



SC40 HDS80

- Job site : SINGAPORE
- Supply year : 2018.01
- Cutting depth : 80M
- Trench width : 1200mm
- Max.torque : 100kNm
- Rotation speed : 0~25rpm
- Weight : 35ton



SC40 HDS100

- Job site : CHINA
- Cutting depth : 100M
- Trench width : 1200mm
- Max.torque : 100kNm
- Rotation speed : 0~25rpm
- Weight : 35ton

Reference List

1	CSC40+HDS60 (#1)	Rep of KOREA	2015.11.26	10	SC40+HDS80 (#10)	SINGAPORE	2018.10.19
2	CSC40+HDS80 (#2)	SINGAPORE	2017.06.05	11	SC40+HDS80 (#11)	SINGAPORE	2019.01.10
3	CSC40+HDS80 (#3)	HONGKONG	2017.12.13	12	SC40+HDS80 (#12)	Rep of KOREA	2019.01.23
4	SC40+HDS80 (#5)	SINGAPORE	2018.01.03	13	SC40+HDS80 (#13)	Rep of KOREA	2020.03.04
5	SC40+HDS80 (#6)	SINGAPORE	2018.01.08	14	SC40+HDS100 (#16)	CHINA	2020.05.07
6	CSC40+HDS80 (#4)	SINGAPORE	2018.02.02	15	MSC40+HDS80 (#14)	SINGAPORE	2021.04.01
7	SC40+HDS80 (#7)	SINGAPORE	2018.02.02	16	SC40+HDS80 (#15)	SINGAPORE	2021.06.11
8	?	?	?	Total Amount (From 2015 to 2021) : 16sets			

Special features

SAMBO CMC's Mechanical D/W grab is very economical and effective Diaphragm Wall construction machine in constructing the Diaphragm Wall underground to Metro, Apartment, Building foundation sites.

The operating quality of SAMBO CMC's SHG series Mechanical D/W grab ensures high productivity in excavation of the Diaphragm Wall.

삼보씨엠씨의 기계식 행그랩은 매우 경제적이고, 효율적인 지하 연속벽 시공장비로써, 지층에 벽식의 현장 타설 말뚝을 조성하여 하중이나 기초 형태에 따라 여러가지 형태의 단면 형상을 만들 수 있으며, 특히 지하철, 아파트, 고층 빌딩의 건물 기초 공사에 많이 사용 된다.



SHG2508HD

- Job site : Rep of KOREA
- Supply year : 2008.07
- Width of wall : 800mm
- Width of basic body : 500mm
- Jaw capacity : 900Liters
- Weight : 11.5ton



SHG2812HD

- Job site : SINGAPORE
- Supply year : 2014.03
- Width of wall : 1200mm
- Width of basic body : 700mm
- Jaw capacity : 1800Liters
- Weight : 16ton



SHG2812HD

- Job site : HONGKONG
- Supply year : 2011.12
- Width of wall : 1200mm
- Width of basic body : 700mm
- Jaw capacity : 1800Liters
- Weight : 16ton



SHG2812SB

- Job site : HONGKONG
- Supply year : 2014.12
- Width of wall : 1200mm
- Width of basic body : 760mm
- Jaw capacity : 1500Liters
- Weight : 14.5ton

Reference List

1	SHG2808ST	Rep of KOREA	2002.12.14
2	SHG2808ST	SINGAPORE	2005.05.03
3	SHG2715HD	SINGAPORE	2005.09.27
4	SHG2708ST	SINGAPORE	2007.04.13
5	SHG2808HD	SINGAPORE	2008.01.10
6	SHG2810ST	SINGAPORE	2008.01.20
7	SHG2710ST	Rep of KOREA	2008.07.07
8	?	?	?

61	SHG3012HD	SINGAPORE	2019.05.03
62	SHG2812HD	SINGAPORE	2020.02.10
63	SHG2812SB	SINGAPORE	2020.03.09
64	SHG2808HD	PHILIPPINES	2020.03.09
65	SHG2808HD	PHILIPPINES	2020.07.10
66	SHG2812HD	SINGAPORE	2020.10.30
67	SHG2812HD	SINGAPORE	2021.06.03
Total Amount (From 2002 to 2021) : 67sets			

Special features

SAMBO CMC's Desander is to remove soil and stone particles from excavating muds and support slurries used in foundation and tunneling jobsite. They can treat slurries such as waterbentonite, water-cement, etc.

- The values are based on slurry flow.
- A series of vibrators, screens, and cyclones are aimed at cleaning the slurry in order to restore the original properties of the support slurry. Excellent effectiveness is available when reusing the support slurries.

삼보씨엠씨 Desander는 지하연속벽 공사의 대구경, 터널 공사시 발생하는 슬러지에서 흙, 모래, 자갈 등을 분리하는 장비이다.

- DESANDER의 최대처리능력은 시간당 공급 되는 슬러리 양으로 결정하여 제작된다.
- 안정액의 최초 신액의 속성으로 복원하기 위해 진동모터, 스크린, 싸이클론 등이 사용되며, 안정액의 재사용에 높은 효력을 발휘한다.



SBD150

- Job site : Mokpo in Rep of KOREA
- Supply year : 2007.10
- Capacity : 150mh/h
- Size : 7,000mm x 2,400mm x 3,400mm
- Primary vibration motor : 2kW x 6P x 2pcs
- Secondary vibration motor : 3kW x 6p x 2pcs
- Desanding pump : 6" x 4"-1set
- Weight : 11ton



SBD500

- Job site : Yangsan in Rep of KOREA
- Supply year : 2008.07
- Capacity : 500mh/h
- Size : 14,000mm x 2,400mm x 4,600mm
- Primary vibration motor : 2kW x 6P x 2pcs
- Secondary vibration motor : 3kW x 6p x 4pcs
- Desanding pump : 8" x 6"-1set
- Weight : 22ton



SBD500

- Job site : Seoul in Rep of KOREA
- Supply year : 2008.03
- Capacity : 500mh/h
- Size : 14,000mm x 2,400mm x 4,600mm
- Primary vibration motor : 2kW x 6P x 2pcs
- Secondary vibration motor : 3kW x 6p x 4pcs
- Desanding pump : 8" x 6"-1set
- Weight : 22ton



SBD500

- Job site : Seoul in Rep of KOREA
- Supply year : 2008.03
- Capacity : 500mh/h
- Size : 14,000mm x 2,400mm x 4,600mm
- Primary vibration motor : 2kW x 6P x 2pcs
- Secondary vibration motor : 3kW x 6p x 4pcs
- Desanding pump : 8" x 6"-1set
- Weight : 22ton

Reference List

1	SBD500	SINGAPORE	2002.12.14	37	SBD500	SINGAPORE	2018.05.10
2	SBD500	Rep of KOREA	2002.03.07	38	SBD500	SINGAPORE	2018.05.16
3	SBD500	SINGAPORE	2011.09.15	39	SBD500	Rep of KOREA	2018.10.22
4	SBD100	Rep of KOREA	2011.12.25	40	SBD500	SINGAPORE	2019.01.10
5	SBD100	Rep of KOREA	2012.04.20	41	SBD500	SINGAPORE	2019.01.28
6	SBD100	Rep of KOREA	2012.05.10	42	SBD500	Rep of KOREA	2020.03.06
7	SBD100	Rep of KOREA	2012.05.25	43	SBD500	SINGAPORE	2020.09.21
8	?	?	?	Total Amount (From 2002 to 2021) : 43sets			

Special features

SAMBO CMC's Filter press is to treat the wastes water and slurry, especially the waste bentonite slurry. It consists of steel frames, filter plates recessed or membrane type with filters, plate separation device, cleaning device, belt conveyor, slurry feed pump, etc.. It dehydrates various wastes slurry by filter pressing, and minimizes the water content of the processed solids. The capacity and specifications can be designed by customer's requirements.

삼보씨엠씨의 FILTER PRESS는 슬러지를 탈수시키는 기계장치로서 후레임, 여과판(Membrane, Recessed), 여과판 가압장치, 판분리장치, 슬러리 이송펌프, 고형물(Cake) 이송장치, 여과포 세척장치 등으로 구성되어 있음.

- 가압펌프 및 여과포에 의해 폐액의 수분을 걸러내어 탈수 고형물의 함수율(25%~35%)을 최대한 낮게 만드는 탈수 설비임.
- 특수 재질의 여과판, 여과포를 사용하므로 부식성이 없고 내식성이 강하며, 조작 및 운전이 용이하고 전자동시스템으로 운전자가 없어도 탈수공정이 가능하도록 설계되었고, 처리용량 및 사양은 구매자의 요청에 적합하게 변경 가능함.



SFP150-60

- Job site : Rep of KOREA
- Supply year : 2012.09
- Min.cycle time : 45min/cycle
- Plate size : 1,500mm x 1,500mm x 85T
- Plate quantity : 60pcs
- Slurry (Feed) pump : 1.5m³/min x 70m
- Weight : 31ton



SFP150-80

- Job site : AUSTRALIA
- Supply year : 2017.05
- Min.cycle time : 50min/cycle
- Plate size : 1,500mm x 1,500mm x 85T
- Plate quantity : 80pcs
- Slurry (Feed) pump : 1.5m³/min x 70m
- Weight : 34ton



SFP150-80

- Job site : SINGAPORE
- Supply year : 2016.11
- Min.cycle time : 50min/cycle
- Plate size : 1,500mm x 1,500mm x 85T
- Plate quantity : 80pcs
- Slurry(Feed) pump : 1.5m³/min x 70m
- Weight : 34ton



SFP150-80

- Job site : Rep of KOREA
- Supply year : 2010.07
- Min.cycle time : 50min/cycle
- Plate size : 1,500mm x 1,500mm x 85T
- Plate quantity : 80pcs
- Slurry(Feed) pump : 1.5m³/min x 70m
- Weight : 34ton

Reference List

1	SFP150/60	Rep of KOREA	2004.12.20
2	SFP100/60	Rep of KOREA	2005.04.09
3	SFP120/60	SINGAPORE	2005.09.10
4	SFP150/80	SINGAPORE	2007.05.25
5	SFP150/80	Rep of KOREA	2008.03.13
6	SFP150/80	DUBAI	2008.12.17
7	SFP150/80	Rep of KOREA	2010.07.07
8	?	?	?

30	SFP150/97	SINGAPORE	2018.02.05
31	SFP150/97	SINGAPORE	2018.02.09
32	SFP150/60	SINGAPORE	2018.04.05
33	SFP150/60	SINGAPORE	2018.07.04
34	SFP150/97	SINGAPORE	2018.09.04
35	SFP150/80	AUSTRALIA	2020.02.07
36	SFP150/60	SINGAPORE	2020.09.11
Total Amount (From 2004 to 2021) : 36sets			

Special features

SAMBO CMC's Jacking system has two kinds of self-elevating units. One is Cylinder & Pin type which has the holes on the leg pipe and These holes are engaged by pins from the traverses in the jack house.

The other is Rack & Pinion gear type Jacking system which has the rack gears on the leg pipe in a row.

- Cylinder & Pin type
- Rack & Pinion type
- Jacking operation is adopted semi or fully automatic control.

삼보씨엠씨 Jacking system은 유압실린더&핀 작동타입과 랙&피니언기어 작동타입이 있다.

- 유압실린더&핀 작동타입
- 랙&피니언 작동타입
- 반, 또는 완전자동 콘트롤 시스템채용



ARCAS

- Model : Cylinder & Pin type
- Job site : Rep of KOREA
- Supply year : 2014.02
- Lifting capacity : 1200ton/Leg
- Engine power : 650Hp(1800rpm)
- x 3set
- Main pump : 140cc/rev x 8ea
- Operating pressure : 280bar
- Jack-up barge : 58m x 32m x 5m



PIONEER I

- Model : Rack & Pinion type
- Job site : Rep of KOREA
- Supply year : 2011.05
- Lifting capacity : 700ton/Leg
- Engine power : 395Hp(1800rpm)
- x 2set
- Main pump : 125cc/rev x 8ea
- Operating pressure : 280bar
- Jack-up barge : 48m x 28m x 4.5m



SEP PHOENIX

- Model : Cylinder & Pin type
- Job site : AUSTRALIA
- Supply year : 2010.06
- Lifting capacity : 900ton/Leg
- Engine power : 395Hp(1800rpm)
- x 2set
- Main pump : 95cc/rev x 8ea
- Operating pressure : 210bar
- Jack-up barge : 50m x 29m x 4.5m



PIONEER II

- Model : Rack & Pinion type
- Job site : KUWAIT
- Supply year : 2014.02
- Lifting capacity : 600ton/Leg
- Engine power : 425Hp(1800rpm)
- x 2set
- Main pump : 89cc/rev x 8ea
- Operating pressure : 280bar
- Jack-up barge : 42m x 24m x 3.8m

Reference List

1	JB01	Rep of KOREA	1995.07.13
2	JB02	Rep of KOREA	1996.03.24
3	KUS ISLAND	Rep of KOREA	2005.09.13
4	SEP ORION	BRAZIL	2009.07.30
5	SEP PHOENIX	AUSTRALIA	2010.06.24
6	PIONNER I	Rep of KOREA	2011.05.28

7	SIRIUS	Rep of KOREA	2012.05.18
8	ARCAS	Rep of KOREA	2014.02.10
9	PIONNER II	KUWAIT	2014.02.20
10	PIONEER III	CHILE	2015.04.12
11	DUBHE	Rep of KOREA	2016.02.15
12	CHALLENGER I	Rep of KOREA	2016.04.15

Total Amount (From 1995 to 2021) : 12sets

Special features

SAMBO CMC's derrick crane lifts and installs the steel segments and precast concrete slabs in the construction site of cable stayed.

- The capacity and style are decided depending on the size of segments and environments of site.
- It's designed the best way to minimum weight when lifting the segments.
- SAMBO CMC's Derrick Crane guarantees safety of construction as well as reduction of a term of work.

데리크크레인 은 사장교 가설공사에서 강형 및 프리캐스트를 인양 및 설치하는 크레인이다.

- 강형의 형상, 크기, 설치환경에 따라 데리크크레인의 형식(고정식, 회전식)이 제작 및 공급된다.
- 강형인양시 지점반력 및 데리크크레인의 중량을 최소화하여 설계하였다.
- 시공 안전 및 업무 효율성을 보장한다.



DOLSAN-HWATAE bridge

- Job site : Rep of KOREA
- Supply year : 2004.02
- Operating pressure : 260bar
- Max.Load capacity : 100ton
- Working speed : 0~2m/min
- Elec. Power : 75kw x 6p x 380v



DOLSAN-HWATAE bridge

- Job site : Rep of KOREA
- Supply year : 2004.02
- Operating pressure : 260bar
- Max.Load capacity : 100ton
- Working speed : 0~2m/min
- Elec. Power : 75kw x 6p x 380v



MACHANG bridge

- Job site : Rep of KOREA
- Supply year : 2006.12
- Operating pressure : 260bar
- Max.Load capacity : 100ton
- Working speed : 0~2m/min
- Elec. Power : 75kw x 6p x 380v



JINDO bridge

- Job site : Rep of KOREA
- Supply year : 2004.02
- Operating pressure : 260bar
- Max.Load capacity : 100ton
- Working speed : 0~2m/min
- Elec. Power : 75kw x 6p x 380v

Reference List

1	SDKF01-95	Rep of KOREA	2004.02.15	6	SDKR01-100A	Rep of KOREA	2006.12.23
2	SDKF02-95	Rep of KOREA	2004.02.15	7	SDKR01-100B	Rep of KOREA	2011.09.30
3	SDKR01-100A	Rep of KOREA	2006.12.23	8	SDKR02-100B	Rep of KOREA	2011.09.30
4	SDKR01-100A	Rep of KOREA	2006.12.23	9	SDKR03-100B	Rep of KOREA	2011.09.30
5	SDKR01-100A	Rep of KOREA	2006.12.23	10	SDKR04-100B	Rep of KOREA	2011.09.30

Total Amount (From 2004 to 2021) : 10sets

10 Tunnel Excavator

Special features

- Excellent and very suitable for using in tunnel and confined site working with strong excavation power.
- Movable boom to 45degree at both sides for the excavation works in the inmost area of the sides, and covers a wide working range of bucket.
- Widely and efficiently workable by using the special boom of various degree.
- 터널전용 굴착장비로서 터널과 제한된 작업현장에서 사용이 적합하며 강력한 굴착력을 가지고 있다.
- 붐 자체가 좌, 우 각각 45도씩 움직일 수 있어 터널측면의 구석진 부분까지도 굴착이 가능 하고, 버킷의 작업각도가 넓다.
- 특수한 붐을 이용하여 다양한 각도로 작업할수 있는 장점을 갖고 있다.



STE280

- Job site : TAIWAN
- Supply year : 2001.09.20
- Engine : HYUNDAI R2900LC
- Type : Water-Cooled, 4-cycle, 6cylinders
- Output : 147kW(197hp)/1,900rpm
- Max.Hydraulic pressure : 343bar



STE220

- Job site : RUSSIA
- Supply year : 2005.02.13
- Engine : HYUNDAI R2200LC
- Type : Water-Cooled, 4-cycle, 6cylinders
- Output : 110kW(148hp)/1,950rpm
- Max.Hydraulic pressure : 343bar



STE280

- Job site : INDIA
- Supply year : 2006.02.21
- Engine : DOOSAN SOLAR300LC-V
- Type : Water-Cooled, 4-cycle, 6cylinders
- Output : 147kW(197hp)/1,900rpm
- Max.Hydraulic pressure : 343bar



STE280

- Job site : AUSTRIA
- Supply year : 2007.07.05
- Engine : DOOSAN SOLAR300LC-V
- Type : Water-Cooled, 4-cycle, 6cylinders
- Output : 147kW(197hp)/1,900rpm
- Max.Hydraulic pressure : 343bar



STE220

- Job site : SYRIA
- Supply year : 2008.04.08
- Engine : DOOSAN DX225LC
- Type : Water-Cooled, 4-cycle, 6cylinders
- Output : 110kW(148hp)/1,950rpm
- Max.Hydraulic pressure : 343bar

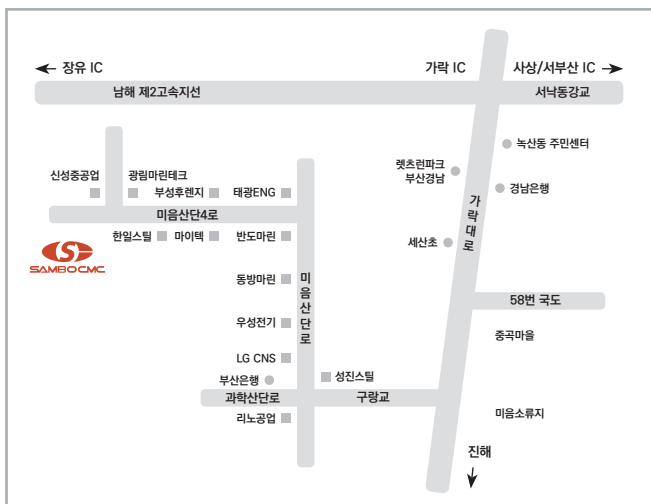


STE280

- Job site : INDIA
- Supply year : 2008.05.12
- Engine : DOOSAN SOLAR300LC-V
- Type : Water-Cooled, 4-cycle, 6cylinders
- Output : 147kW(197hp)/1,900rpm
- Max.Hydraulic pressure : 343bar

Reference List

1	STE280	KOREA	2001.09.20	5	STE280	AUSTRIA	2007.07.05
2	STE220	RUSSIA	2005.02.13	6	STE220	SYRIA	2008.04.08
3	STE280	INDIA	2006.02.21	7	STE280	INDIA	2008.05.12
4	STE280	INDIA	2006.02.25	Total Amount (From 2001 to 2021) : 7sets			



SAMBO C.M.C Head Office

65, Mieumsandan 4-ro, Gangseo-gu Busan, Rep. of KOREA

Tel : +82-51-717-0581 Fax : +82-51-717-0582

International Tel : +82-70-4817-9808

E-Mail : sambo@sambocmc.com

Web Site : www.sambocmc.com